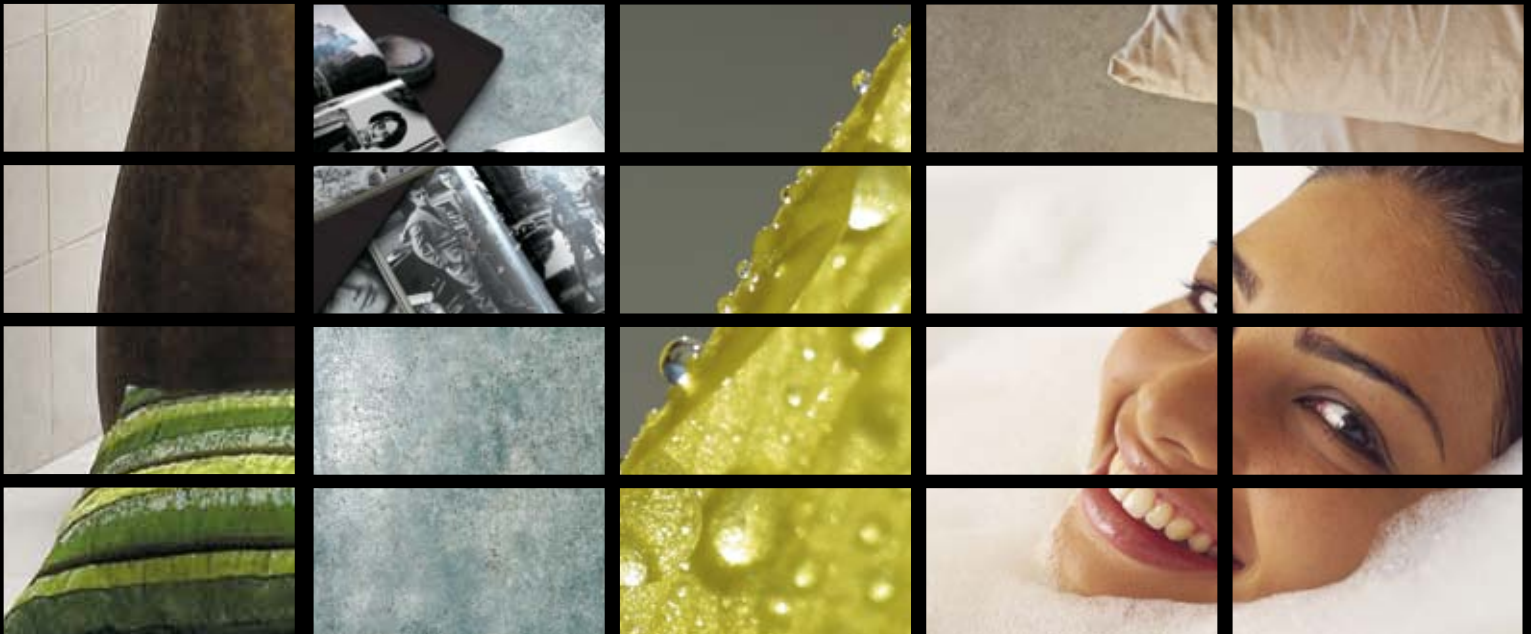


Pocket . Binder .

IMAGO



Una prestigiosa collezione dalle forti tonalità marmoree e dalle caratteristiche anticature della superficie nobilitata dal Grès Porcellanato.

Un prodotto che potrebbe essere definito "new classic" per l'innovativa interpretazione stilistica della materia che fonde la naturalezza delle pietre calcaree alla luminosità del metallo e alla preziosità della madreperla.

A prestigious collection with strong marble shades and peculiar aged surface, made even more precious by Porcelain Stoneware.

A product that could be defined "new classic" thanks to its mould-breaking stylistic forging of the matter, merging the truthfulness of calcareous stones with metal brightness and pearl refinement.

Une prestigieuse collection caractérisée par les fortes tonalités du marbre et par une surface vieillie particulière, ennoblie par le Grès Cérame.

Un produit qui pourrait être défini "new classic", grâce à l'interprétation stylistique innovante de la matière qui fond le naturel des pierres calcaires, la luminosité du métal et la richesse du nacre.

Eine eindrucksvolle Kollektion, die durch die strengen Akzente des Marmors und die charakteristische Alterung der edlen Oberfläche des Feinsteinzeugs geprägt wird.

Es handelt sich um ein Produkt, das durch die innovative stilistische Interpretation der Materie, die die Natürlichkeit des Kalksteins, die Helle des Metalls und die Kostbarkeit des Perlmutts zum Ausdruck bringt, als "New Age" bezeichnet werden kann.

Эта престижная коллекция выполнена из мраморовидного Керамогранита решительных оттенков, имеющего характерную состаренную поверхность.

Продукт, который можно было бы определить как «new classic» за новаторскую стилистическую интерпретацию материала, который сочетает в себе натуральность известнякового камня, блеск металла и изысканность перламутра.

imago





imago





imago



44,2x44,2 SPADIX lap ret



Civilization of Beauty



imago



44,2x44,2 MUS lap ret . 44,2x44,2 FRILL MUS lap ret . 8,2x44,2 FRILL MUS lap ret .



Civilization of Beauty

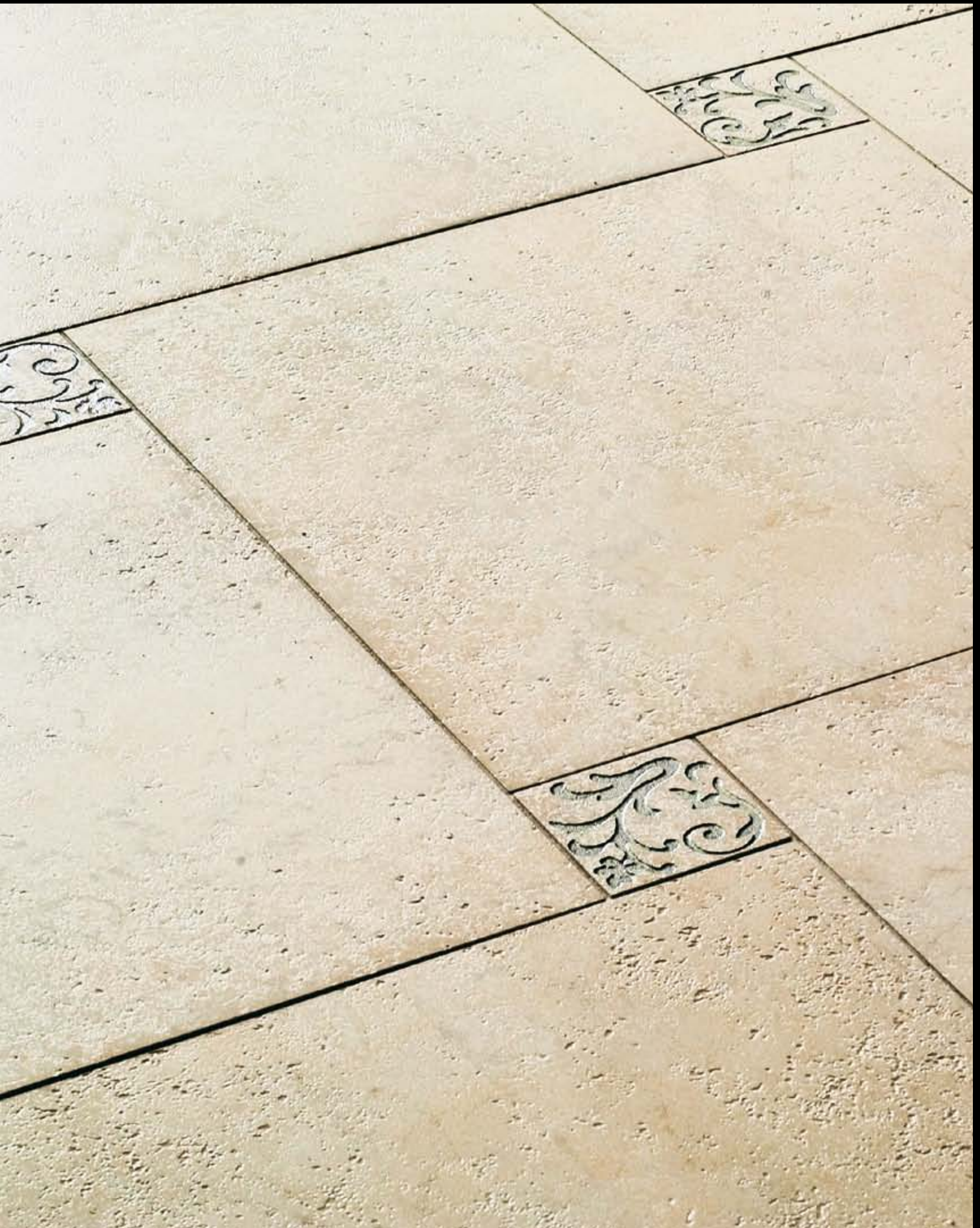


imago





Civilization of Beauty



IMAGO

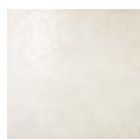
44,2x44,2 - 22x22 : SPESSORE - THICKNESS - ÉPAISSEUR - STÄRKE - ESPESOR - ТОЛЩИНА **12mm**

GRES PORCELLANATO A TUTTA MASSA. FULL BODY PORCELAIN TILES. GRES CERAME PLEINE MASSE. FEINSTEINZEUG VOLLE MASSE. GRES PORCELÁNICO CON COLORACIÓN EN MASA. ГОМОГЕННЫЙ КЕРАМОГРАНИТ. ОЛАПАТО Е РЕТИФИКАТО. HONED AND RECTIFIED. SEMI-POLI ET RECTIFIÉ. TEI-POLIERT UND KALIBRIERT. LAPEADO Y RECTIFICADO. ΓΥΑΛΙΣΜΕΝΟ ΚΑΙ ΛΕΙΑΣΜΕΝΟ. ПОЛУТОПИРОВАННАЯ И РЕКТИФИЦИРОВАННАЯ.

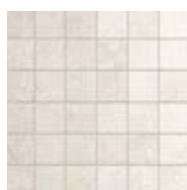
CEREUS



B170 4101. CEREUS 44,2x44,2 . 17 3/8"x17 3/8" Lap. Ret. ○



B200 2101. CEREUS 22x22 . 8 11/16"x8 11/16" Lap. Ret. ○



B270 9121. CEREUS 5x5 SU RETE 30x30 . 12"x12" Lap. Ret. ○



R40 R178. Set 3 pcs. Treccia CEREUS 3,5x44,2 . 1 3/8"x17 3/8" Lap. Ret. ○

V150 R472. Ang. Treccia IMAGO 3,5x3,5 . 1 3/8"x1 3/8"



V397 L509. FRILL CEREUS 44,2x44,2 . 17 3/8"x17 3/8" Lap. Ret. ○



V310 L510. FASCIA FRILL CEREUS 8,2x44,2 . 3 3/8"x17 3/8" Lap. Ret. ○



V215 L511. ANG. FASCIA FRILL CEREUS 8,2x8,2 . 3 3/16"x3 3/16" Lap. Ret. ○



V90 B101. Battiscopa CEREUS 8,5x44,2 . 3 3/8"x17 3/8"

GLAUCUS



B170 4103. GLAUCUS 44,2x44,2 . 17 3/8"x17 3/8" Lap. Ret. ○



B200 2103. GLAUCUS 22x22 . 8 11/16"x8 11/16" Lap. Ret. ○



B270 9123. GLAUCUS 5x5 SU RETE 30x30 . 12"x12" Lap. Ret. ○



R40 R180. Set 3 pcs. Treccia GLAUCUS 3,5x44,2 . 1 3/8"x17 3/8" Lap. Ret. ○

V150 R472. Ang. Treccia IMAGO 3,5x3,5 . 1 3/8"x1 3/8"



V397 L512. FRILL GLAUCUS 44,2x44,2 . 17 3/8"x17 3/8" Lap. Ret. ○



V310 L643. FASCIA FRILL GLAUCUS 8,2x44,2 . 3 3/8"x17 3/8" Lap. Ret. ○



V215 L644. ANG. FASCIA FRILL GLAUCUS 8,2x8,2 . 3 3/16"x3 3/16" Lap. Ret. ○



V90 B103. Battiscopa GLAUCUS 8,5x44,2 . 3 3/8"x17 3/8"

MUS



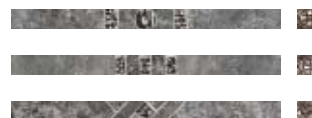
B170 4104. MUS 44,2x44,2 . 17 3/8"x17 3/8" Lap. Ret. ○



B200 2104. MUS 22x22 . 8 11/16"x8 11/16" Lap. Ret. ○

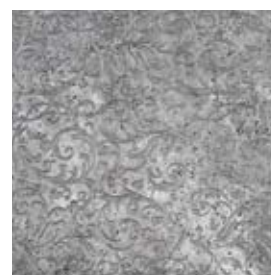


B270 9124. MUS 5x5 SU RETE 30x30 . 12"x12" Lap. Ret. ○



R40 R181. Set 3 pcs. Treccia MUS 3,5x44,2 . 1 3/8"x17 3/8" Lap. Ret. ○

V150 R472. Ang. Treccia IMAGO 3,5x3,5 . 1 3/8"x1 3/8"



V397 L414. FRILL MUS 44,2x44,2 . 17 3/8"x17 3/8" Lap. Ret. ○



V310 L417. FASCIA FRILL MUS 8,2x44,2 . 3 3/8"x17 3/8" Lap. Ret. ○



V215 L420. ANG. FASCIA FRILL MUS 8,2x8,2 . 3 3/16"x3 3/16" Lap. Ret. ○

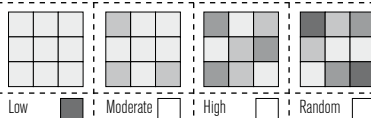


V90 B104. Battiscopa MUS 8,5x44,2 . 3 3/8"x17 3/8"



Civilization of Beauty

SHADE SPECTRUM



R9

SCIVOLOSITÀ
SLIPPERY GRADE

		EUROPALLET 80x120 cm						
FORMATO cm. Size	CODICE Code	PZ. X SCAT. Pieces x Box	MQ. X SCAT. Sqm x Box	KG X SCAT. Weight x Box	SCAT. X PAL. Boxes x Pal.	MQ. X PAL. Sqm x Pal.	KG X PAL. Weight x Pal.	Cm. h Pal.
44,2x44,2	Tile	5	0,98	25	52	50,96	1320	104
44,2x44,2	Frill	1	-	5	-	-	-	-
22x22	-	20	0,97	25	60	58,2	1520	82
8x44,2	Fascia Frill	4	-	4,5	-	-	-	-
8,2x8,2	Ang Fascia Frill	4	-	0,7	-	-	-	-

EBUR



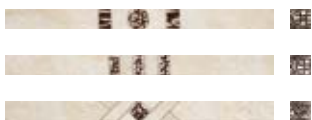
B170 4102. EBUR 44,2x44,2 . 17 3/8"x17 3/8" Lap. Ret. ○



B200 2102. EBUR 22x22 . 8 11/16"x8 11/16" Lap. Ret. ○



B270 9122. EBUR 5x5 SU RETE 30x30 . 12"x12" Lap. Ret. ○



R40 R179. Set 3 pcs. Treccia EBUR 3,5x44,2 . 1 3/8"x17 3/8" Lap. Ret. ○

V150 R472. Ang. Treccia IMAGO 3,5x3,5 . 1 3/8"x1 3/8"



V397 L413. FRILL EBUR 44,2x44,2 . 17 3/8"x17 3/8" Lap. Ret. ○



V310 L416. FASCIA FRILL EBUR 8,2x44,2 . 3 3/8"x17 3/8" Lap. Ret. ○



V215 L419. ANG. FASCIA FRILL EBUR 8,2x8,2 . 3 3/16"x3 3/16" Lap. Ret. ○



V90 B102. Battiscopa EBUR 8,5x44,2 . 3 3/8"x17 3/8"

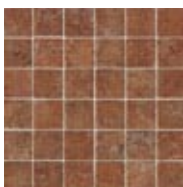
SPADIX



B170 4105. SPADIX 44,2x44,2 . 17 3/8"x17 3/8" Lap. Ret. ○



B200 2105. SPADIX 22x22 . 8 11/16"x8 11/16" Lap. Ret. ○



B270 9131. SPADIX 5x5 SU RETE 30x30 . 12"x12" Lap. Ret. ○



R40 R190. Set 3 pcs. Treccia SPADIX 3,5x44,2 . 1 3/8"x17 3/8" Lap. Ret. ○

V150 R472. Ang. Treccia IMAGO 3,5x3,5 . 1 3/8"x1 3/8"



V397 L415. FRILL SPADIX 44,2x44,2 . 17 3/8"x17 3/8" Lap. Ret. ○



V310 L418. FASCIA FRILL SPADIX 8,2x44,2 . 3 3/8"x17 3/8" Lap. Ret. ○



V215 L421. ANG. FASCIA FRILL SPADIX 8,2x8,2 . 3 3/16"x3 3/16" Lap. Ret. ○



V90 B105. Battiscopa SPADIX 8,5x44,2 . 3 3/8"x17 3/8"

