

# CREATION

SPRING - SUMMER 2020



**Perspective.** Designed by Sacha Lakic (see page 2).

*French Art de Vivre*

**rochebois**  
PARIS

# Edito

Creating a new collection is to give free rein to creativity and imagination, to picture new shapes and contours. It also means to dare reinterpreting existing designs, seeing them from a different angle, allowing them new colours, materials and sizes. It always refers to the attention to details, precise finish and well-done work. Because every creation at Roche Bobois is thought so as to navigate through time and trends. We are delighted to introduce you an excerpt of this new collection, and are inviting you to discover more on [roche-bobois.com](http://roche-bobois.com) and in our showrooms.

**Roche Bobois. French Art de Vivre.**



Steeple chair, designed by Enrico Franzolini.

## Aqua - designed by Fabrice Berrux

**Dining table, marble base**

**Aqua.** Oval dining table, L.250 x H.75 x D.125cm with central base in marble (3 types). Top in polyurethane and lacquered with MDF with Fenix® laminated veneer (black, white or grey). Available in Ø158 and Ø138cm. **Omino floor lamp,** designed by Davide Monopoli. **Equinoxe rug,** designed by Elizabeth Leriche. **European manufacture.**

**Cover:**  
**Perspective** - designed by Sacha Lakic  
**Corner Composition by elements**

Upholstered in Orsetto Flex fabric, seat and back in foam. Structure in solid fir wood, pine plywood and engineered composite wood-stained solid beech base. Other dimensions available. **Evol cocktail table and end table,** designed by Cédric Ragot. **Tilt armchair,** designed by Sacha Lakic. **Apex ottoman,** designed by Sacha Lakic. **Pisa floor lamp,** designed by Carlo Zerbato. **European manufacture.**





### Kumo - designed by Victor Garnot

Cocktail table with two tops in MDF covered with a mix of two Epoxy resins, white and night blue. Legs in solid stained ash wood, col. Charbon. L.160 x H.38 x D.78cm. European manufacture.

### Parcours - designed by Sacha Lakic

Large 3-seat sofa



CREATION  
SPRING - SUMMER 2020

### Temps Calme - designed by Studio Roche Bobois

Modular composition per elements



### Leaf - designed by Antoine Fritsch & Vivien Durisotti

Cocktail table with 3 tops in engraved colourless Altuglas (PMMA), legs in solid oak with white ceruse finish, base in steel with lacquer finish, col. white. L.85 x H.40 x Ø85cm. Opened Ø100cm. European manufacture.

**Temps Calme. Modular composition per elements**, L.413 x H.87 x D.104cm. Interior upholstered in Odea plain fabric, exterior upholstered in smooth plain fabric. Legs in solid beech with wenge-stained varnish. Other dimensions available. **Leaf cocktail table and side table**, designed by Antoine Fritsch & Vivien Durisotti. **Farouche rug**, designed by Alessandra Benigno. European Manufacture.

**Parcours. Large 3-seat sofa**, L.238 x H.78 x D.92cm. Upholstered in Giada fabric (60% acrylic, 19% cotton, 11% viscose, 6% polyester, 4% other fibres). Piping in Lucy fabric, (65% cotton, 35% polyester). Lumbar cushion in Hawaii fabric (100% cotton) by **Jean Paul Gaultier**. High density foam-filled padded seat 35-25kg/m³ and back rest 25kg/m³. Structure in solid pine wood, pine plywood and engineered composite wood. Cross-webbing XL elastic straps. Legs in solid beech in grey. Other dimensions available. **Kumo cocktail table and end table**, designed by Victor Garnot. **Flou floor lamp**, designed by Sophie Larger. **Mariana rug**, designed by Mariana Waismaan. European manufacture.

rochebobois  
PARIS



**Itinéraire** - designed by Philippe Bouix  
**Sofa per elements, double depth backrests**

**No Limit Giant** - designed by Vanessa Mitrani

Vase in blown glass and fishes in porcelain. Available in other colours. Ø40 x H.35cm.  
**European manufacture.**



**Itinéraire. Sofa per elements**, L.410/312 x H.90 x D.312/274cm. Lift fabric. Contrasting piping. Double-depth backrest with pendulum mechanism (fixed version also available), adjustable armrests. Padded seat and armrests in foam and cotton. Solid wood structure. HR elastic strap suspension. Other dimensions available. **Itinéraire cocktail table**, designed by Philippe Bouix. **Reine floor lamp**, designed by Chape & Mache. **European manufacture.**

**Blogger 3. Large 3-seat sofa**, L.240 x H.67 x D.104cm. Upholstered in padded Marshmallow fabric (100% polyester). Tufted seat in bi-density HR foam, 25-35kg/m³. Structure in solid pine wood, pine plywood and particle board. XL elastic strap suspension. Legs in solid beech with black stain. Other dimensions available. **Cute Cut cocktail tables**, designed by Cédric Ragot. **European manufacture.**

**Cute Cut** - designed by Cédric Ragot

Cocktail table in polyester resin and glass. Many finishes available.  
XXS: L.59 x H.23 x D.54cm. XXM: L.100 x H.23 x D.86cm.  
**European manufacture.**

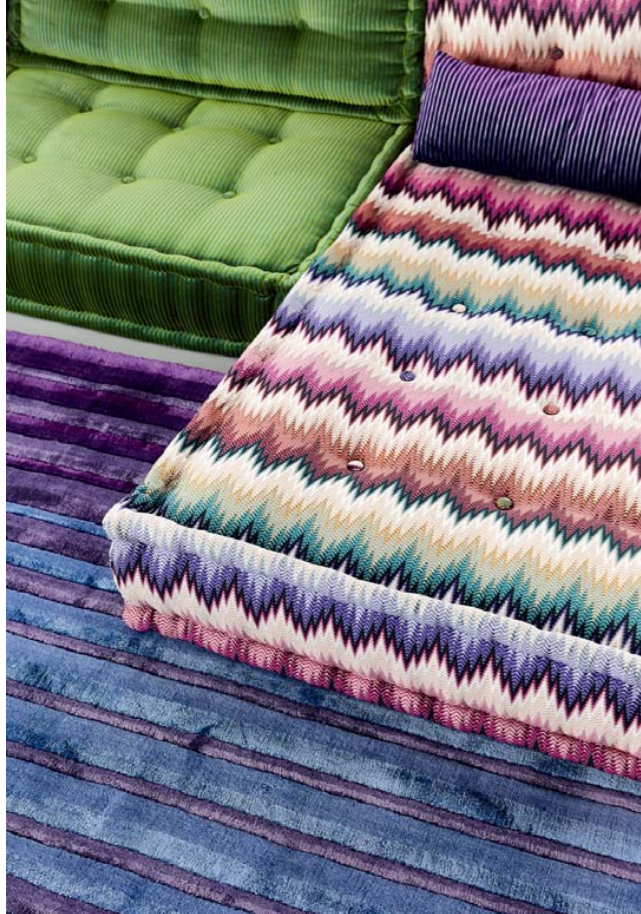


**Blogger 3** - designed by Roberto Tapinassi & Maurizio Manzoni  
**Large 3-seat sofa**



**Mah Jong** - designed by Hans Hopfer  
Modular seating system, upholstered in **MISSONI** HOME fabrics

Mah Jong Sofa 3D app 



**Mah Jong.** Modular seating system, upholstered in **MISSONI** HOME fabrics, with endless combinations of seat cushions (L.95 x H.19 x D.95cm.), straight and corner backs (L.95 x H.53 x D.95cm.), and lounge chair units (L.159 x H.19 x D.95cm) All elements are fully padded, tufted and finished by hand. Adjustable back also available. Rockford rug, **MISSONI** HOME for Roche Bobois. European manufacture.



Clockwork mechanism with visible gears remote control and integrated battery.

**Astrolab 2.0** - designed by Studio Roche Bobois  
Central motorised extension leaf with visible gears



**Scenario** - designed by Sacha Lakic  
Modular leather composition, double-depth backrests



**Voil ** - designed by Alessio Bassan

Table lamps in coloured Murano blown glass and ring in steel. L.60 x H.59 x D.37cm. **European manufacture.**

**Scenario. Modular leather composition**, L.445/259 x H.85 x D.115cm. Upholstered in Soave leather, rectified pigmented grain. Double-depth backrests with pendulum mechanism, mechanical armrests with lateral opening. Metal base. Other dimensions available. **Scenario cocktail tables**, designed by Sacha Lakic. **Moved half-moon consoles**, designed by Sandra Demuth. **European manufacture.**

**Astrolab 2.0. Rectangular dining table**, L.200 x H.75 x D.110cm with a central motorised 80cm extension leaf. Top in 12mm-thick tempered glass. Base in steel with black nickel finish. **Ava dining armchairs**, designed by Song Wen Zhong. **Vibrato floor lamp**, designed by C dric Ragot. **European manufacture.**



**Backstage** - designed by Roberto Tapinassi & Maurizio Manzoni  
**Bed, asymmetrical bed frame**

**Manta** - designed by Antoine Fritsch & Vivien Durisotti

Armchair made in cold foam on steel structure. Upholstered in fabric (many choices and colours available). Foot base col. bronze. Removable covers with zipper. L.86 x H.78 x D.74cm. **European manufacture.**

**Radian** - designed by Cédric Ragot

Occasional table in enameled ceramic (several colours available). H.40 x Ø44cm. **European manufacture.**



**Backstage. Bed**, L.306 x H.145cm (or 125cm) x D.218cm. Headboard composed of vertical panels including 4 articulated side panels. Upholstered in velvet with leather borders (other fabric and leather options available). Asymmetrical bed frame upholstered in leather. All mattress sizes available, headboard available separately or with bed frame. **Manta armchairs**, designed by Antoine Fritsch & Vivien Durisotti. **Radian bedside tables**, designed by Cédric Ragot. **Zebra rug**, designed by Delphine Chopard. **European manufacture.**

**Intralatina. Modular wall unit system with wall mounted back panel**, back-lit metal shelves and lower storage units. All elements available in the following finishes Alpi® reconstituted oak veneer, matte lacquer, hand-applied metallic patina. **Odéa 2 armchairs**, designed by Roberto Tapinassi & Maurizio Manzoni. **Ramo side table, pedestal table and end table**, designed by Wood & Cane. **Structure rug**, designed by Eric Gizard. **European manufacture.**

**Victoria** - designed by Vanessa Mitrani

Vase in blown glass, bronze and agate. L.18 x H.40cm.  
**European manufacture.**



**Intralatina** - designed by Studio Roche Bobois  
**Modular wall unit**





**Cascade** - designed by Fabrice Berrux

Cocktail table with double trays, structure in lacquered steel, matching colour of bottom tray in marble-like Noir Desir ceramic, and top tray in 8mm-thick natural glass. L.99 x H.35 x D.99cm. European manufacture.

**Préface** - designed by Studio Roche Bobois  
Modular sofa entirely removable



**Eden Rock** - designed by Sacha Lakic  
Dining table, Carrara marble top



**Eden Rock. Dining table:** L.242 x H.76 x D.101cm. Stained solid cherry wood structure. Carrara marble top with waterproof varnish finish. Brushed brass threads and feet. Other dimensions available. **Sideboard:** L.220 x H.77 x D.58cm. **Chairs:** L.55 x H.86 x D.58cm. **Bridges:** L.61 x H.86 x D.58cm. **Médusa Suspension**, designed by Carlo Zerbaro. European manufacture.

**Préface.** L.458 x H.59 x D.232cm. Upholstered in Discours fabric. Contrasting piping. Entirely removable covers. Padded seat mattress. Base in solid beech with wenge sainted wood with varnish finish. Other dimensions available. **Cascade cocktail table and end table**, designed by Fabrice Berrux. European manufacture.



## Mah Jong Outdoor - designed by Hans Hopfer

### Outdoor modular sofa per elements

Upholstered in fabrics designed for outdoor. Endless combinations, including seat cushions (L.95 x H.19 x D.95cm), straight and corner backs (H.53cm) and lounge chairs (L.159 x H.19 x D.95cm). All elements are padded and stitched by hand. Base in lacquered and cathaphoresis treated openwork metal, with white, grey or bespoke-colour finishes. Dryfeel foam seat and back cushions. Solid fir wood structure and particle boards with water-based coatings and treated for outdoor use. Adjustable base in lacquered anti-corrosion treated metal. Many finishes available. **Doc pedestal tables**, designed by Fred Rieffel. **European manufacture.**

Mah Jong Sofa 3D app



Photo Michel Gibert, photograph used for reference only. Herdade Do Freixo, TASCHEN, Editions Zulma, sculpture : [www.mpcem.com](http://www.mpcem.com), Pierre Stéphane Dumas – [www.bubbletree.fr](http://www.bubbletree.fr), [www.gerfor.com](http://www.gerfor.com), sculpture [www.antoinepierini.com](http://www.antoinepierini.com), architect: [www.christophebernard.eu](http://www.christophebernard.eu), centro de Interpretação do Românico, Lousada, Portugal, stone Sculpture museum of the Fondation Kubach-Wilmsen, Hôtel Casa Bonay, Barcelone / papier-peint: [sandbergwallpaper.com](http://sandbergwallpaper.com)



Roche Bobois acts for protection of forest resources by printing this brochure on PEFC certified stock, made of fibres from sustainably controlled and managed forests.